



Item Code 73280/73281/21681

Handy Ink Line Marker Pro Plus Auto-rewind

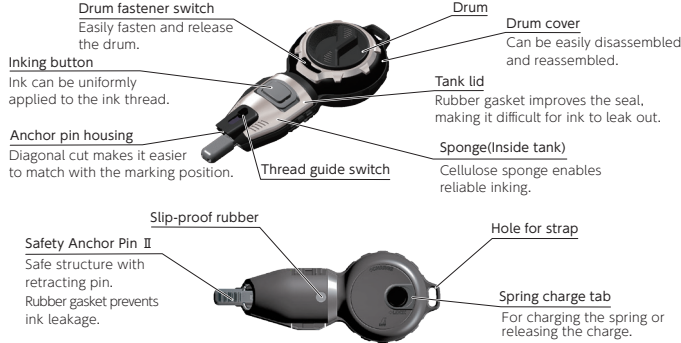
■ Use

- For all types of marking

■ Features

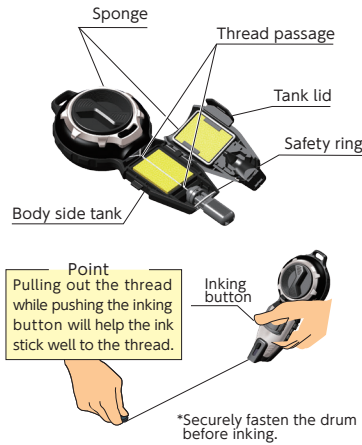
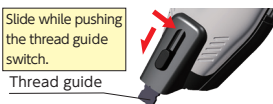
- New lock function enables smooth opening of tank lid and easy replacement of thread
- One-touch thread guide helps to mark to a corner easily
- Angled mouth helps to fix thread easily as it reduces strain on the hand when pressing down on it
- "Inking button" that creates a thick, bold line
- Sealed ink tank with rubber gasket prevents leaking
- Can be stored in a special holder(sold separately)

■ Part Names



■ Instructions

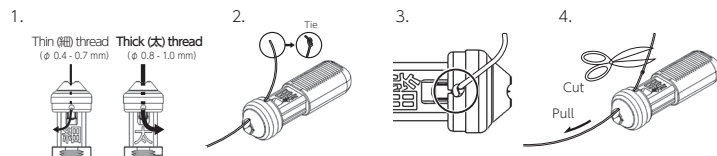
1. Place on a level surface, and open the tank lid. (The tank can easily be opened by lifting the edge of the lid.)
2. Pour ink on the sponge in the tank on the main body side. Closing the tank lid will cause the sponge on the lid side to absorb the ink.
3. Close the tank lid with a click.
4. Please use the inking button when starting to use the device or if ink does not stick well during use. (Refer to the Point section about this.)
5. Sliding the thread guide makes it easy to do inking on floors and walls, etc.



■ Attaching the Safety Anchor Pin II

*When changing the Safety Anchor Pin II, locking the drum cover switch will lock the drum and prevent the thread from auto-rewinding. You can use it safely and conveniently when the ink thread is entangled or when you are changing the Safety Anchor Pin II.

1. Pass the ink thread through the tip of the Safety Anchor Pin II. When using a thin thread (approx. ϕ 0.4 - 0.7 mm), thread it through the hole on the "thin(細)" side, and when using a thick thread (approx. ϕ 0.8 - 1.0 mm) thread it through the hole on the "thick(太)" side.
2. Make a knot at the end of the ink thread that was passed through.
3. Pull the thread so that the knot catches and is secured inside the Safety Anchor Pin II's cavity.*
4. Cut off excess thread that is protruding and the process will be complete.



*If the thread does not catch in the cavity, please tie it in the following way.

1. Wrap the tip of the thread around your index finger once.
2. Twist the thread 5 or 6 times while shifting your thumb and index finger.
3. Hold the twisted part with your middle finger and thumb and pull the thread.
4. Pull tightly and tie a knot.

■ Troubleshooting and Solutions

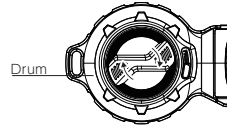
Problem	Troubleshoot	Solution
The ink thread will not come out or does not rewind well.	Did the ink thread come off the drum?	→ Rewind the ink thread again normally.
	Did the ink thread become entangled?	→ Cut the ink thread where it is entangled.
	Is the spring's charge becoming weaker?	→ Charge up the spring.
	Is debris clogging the passage for the tank side thread?	→ Remove any debris from the passage.
	Is the tank side thread out of the thread passage?	→ Return the thread to the thread passage.

■ Specifications

Material	Main body: ABS resin, polyacetal resin, silicon rubber, rubber, stainless steel Spring(Auto-rewind): Stainless steel Anchor Pin: ABS resin, rubber Anchor Pin Needle: Spring steel Ink thread: Nylon Sponge: Cellulose
Thread	ϕ 0.6 mm \times 20 m (auto-rewind 10 m)
Body Size	200 \times 81 \times 40 mm (when anchor pin is retracted)
Weight	190 g

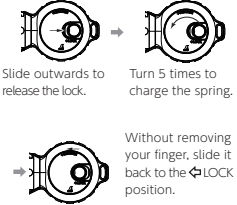
10 m Auto-rewind Type

20 m of ink thread is wound up. Can automatically rewind 10 m of thread. If you pull out more than 10 m of ink thread, you will need to rewind it manually. The spring has already been charged. Inking work will be possible once you fill with ink. (If the device ceases to rewind partway through, please refer to ■Trouble-shooting and Solutions.)



■ How to Rewind the Ink Thread

Wind 10 m of thread with the spring's power. To rewind more than 10 m of thread, first rewind 10 m with the spring's power, and then turn the drum to manually rewind the remaining thread as illustrated in the diagram to the right. Please charge the spring after the Safety Anchor Pin II has been completely stowed away.



■ How to Charge the Spring

1. Slide the spring charge tab outwards to release the spring charge.
2. Charge the spring by turning the spring charge tab on the front of the device 5 times in a counter-clockwise direction.
3. After charging, slide the spring charge tab back to the LOCK position and fasten it. Use only after pulling out the anchor pin and confirming that it returns properly.

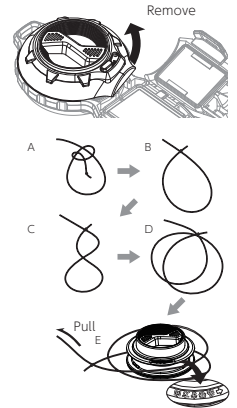
■ How to Replace the Ink Thread

◇Disassembly

1. Release the spring charge.
2. Separate the Safety Anchor Pin II, open the tank lid, turn the drum cover counter-clockwise, and remove the drum cover.

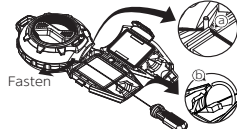
◇Ink Thread Replacement

3. Take out the drum and remove the old ink thread then wind the new ink thread.
 - 1) Make a knot at the tip of the new ink thread, and make a loop as in Figure A.
 - 2) Open the loop wide as in Figure B.
 - 3) Twist the loop as in Figure C, and overlap the two smaller loops as in Figure D.
 - 4) Push the drum through the two loops as in Figure E, and gently pull to fasten. Once fastened, turn the drum over and reel the thread in the wind-up direction.



◇Assembly

4. Place the drum back into its original place and guide the thread through as in the figure on the right. It is important to pass through the groove next to the side shaft ① and the safety ring ②.
5. Replace the drum cover, and turn clockwise to fasten.
6. Charge the spring.
(Please refer to ■How to Charge the Spring above)



⚠ Warning

- The anchor pin is sharp and dangerous. For your safety, do not remove the anchor pin by pulling out the thread.
- Pay attention to the anchor pin when winding the thread. For your safety, please wear safety goggles.
- To rewind the ink thread, press on the drum and adjust the speed of the anchor pin while safely rewinding



⚠ Caution

- Using a damaged ink thread can cause malfunction. If the thread becomes damaged, immediately cut the damaged portion and reattach the anchor pin. Also, be sure to use the safety ring at the anchor pin housing when changing the thread.
- Do not fill with anything other than ink for construction use as the device will no longer be able to do marking
- Do not open or close the tank lid while holding the drum upside down. This can cause excess ink to leak from inside the drum and result in malfunction.
- Do not overfill with ink, as this can cause ink to leak. If too much ink has been filled, open the tank lid and remove the excess amount.
- Close the tank lid completely until you hear it click into place

Shinwa Rules Co., Ltd.

3-18-21 Koya, Sanjo, Niigata, 955-8577 JAPAN

URL <https://www.shinwasokutei.co.jp/english/>

MADE IN CHINA

Sold separately

Item Code

73286

Holder for
Handy Ink
Line Marker
Pro/Jr. Plus

